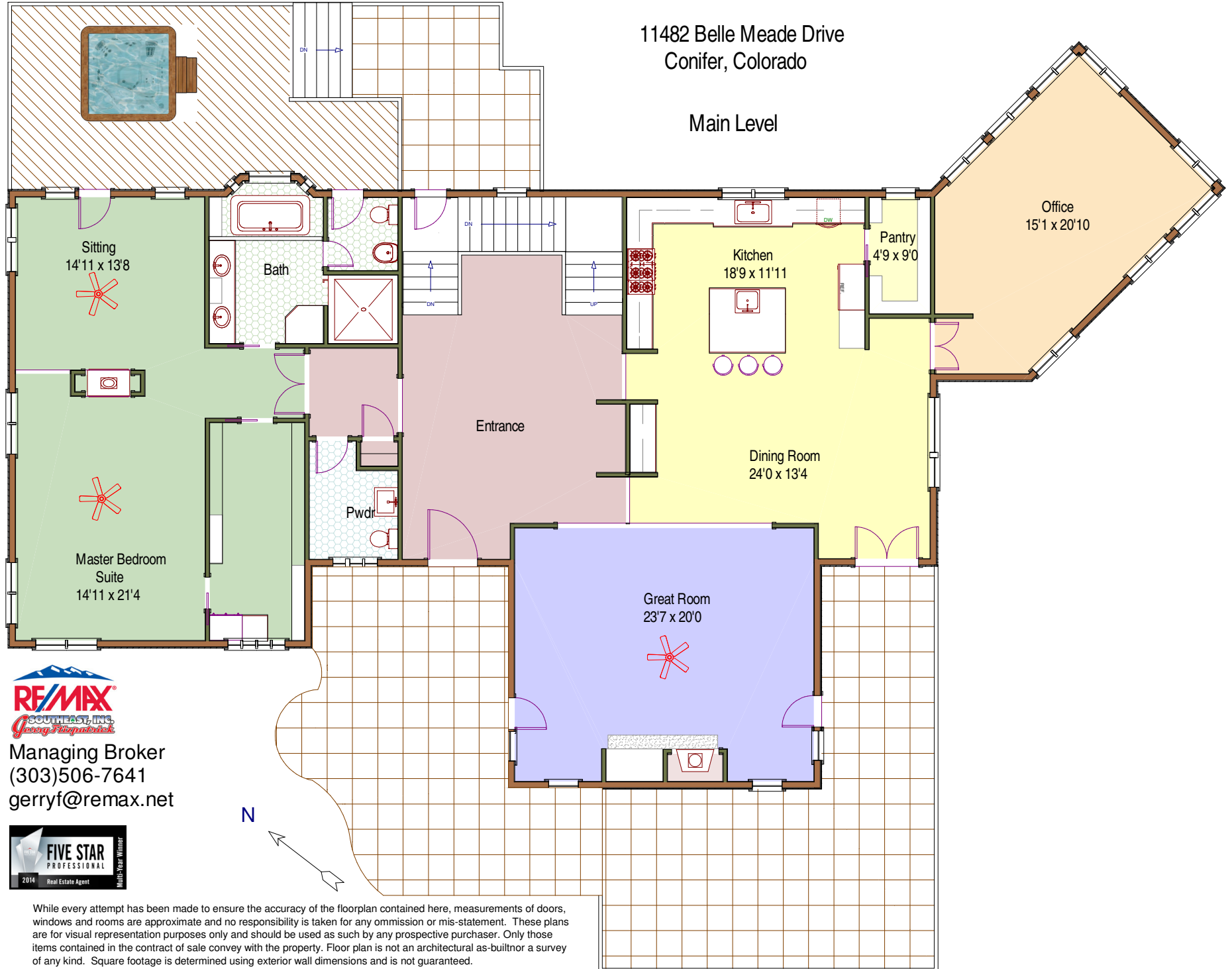


11482 Belle Meade Drive  
Conifer, Colorado

Main Level



Managing Broker  
(303)506-7641  
gerryf@remax.net

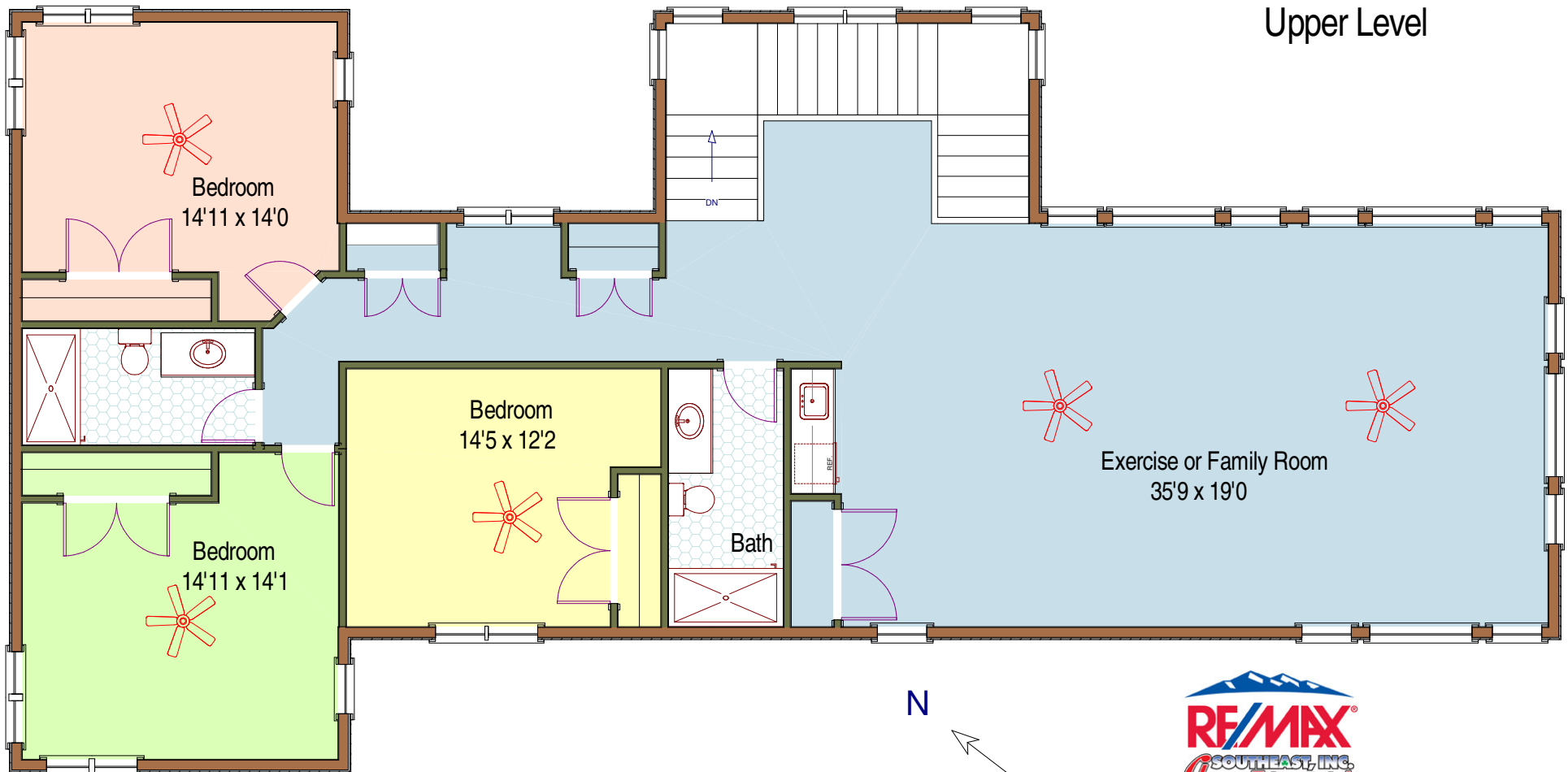


While every attempt has been made to ensure the accuracy of the floorplan contained here, measurements of doors, windows and rooms are approximate and no responsibility is taken for any omission or mis-statement. These plans are for visual representation purposes only and should be used as such by any prospective purchaser. Only those items contained in the contract of sale convey with the property. Floor plan is not an architectural as-built nor a survey of any kind. Square footage is determined using exterior wall dimensions and is not guaranteed.

Floor plan created by Overhead Views, (303)886-9578, eswaldner@nednet.net

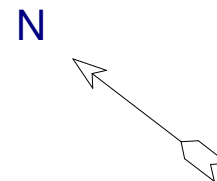
11482 Belle Meade Drive  
Conifer, Colorado

Upper Level



While every attempt has been made to ensure the accuracy of the floorplan contained here, measurements of doors, windows and rooms are approximate and no responsibility is taken for any omission or mis-statement. These plans are for visual representation purposes only and should be used as such by any prospective purchaser. Only those items contained in the contract of sale convey with the property. Floor plan is not an architectural as-built nor a survey of any kind. Square footage is determined using exterior wall dimensions and is not guaranteed.

Floor plan created by Overhead Views, (303)886-9578, eswaldner@nednet.net

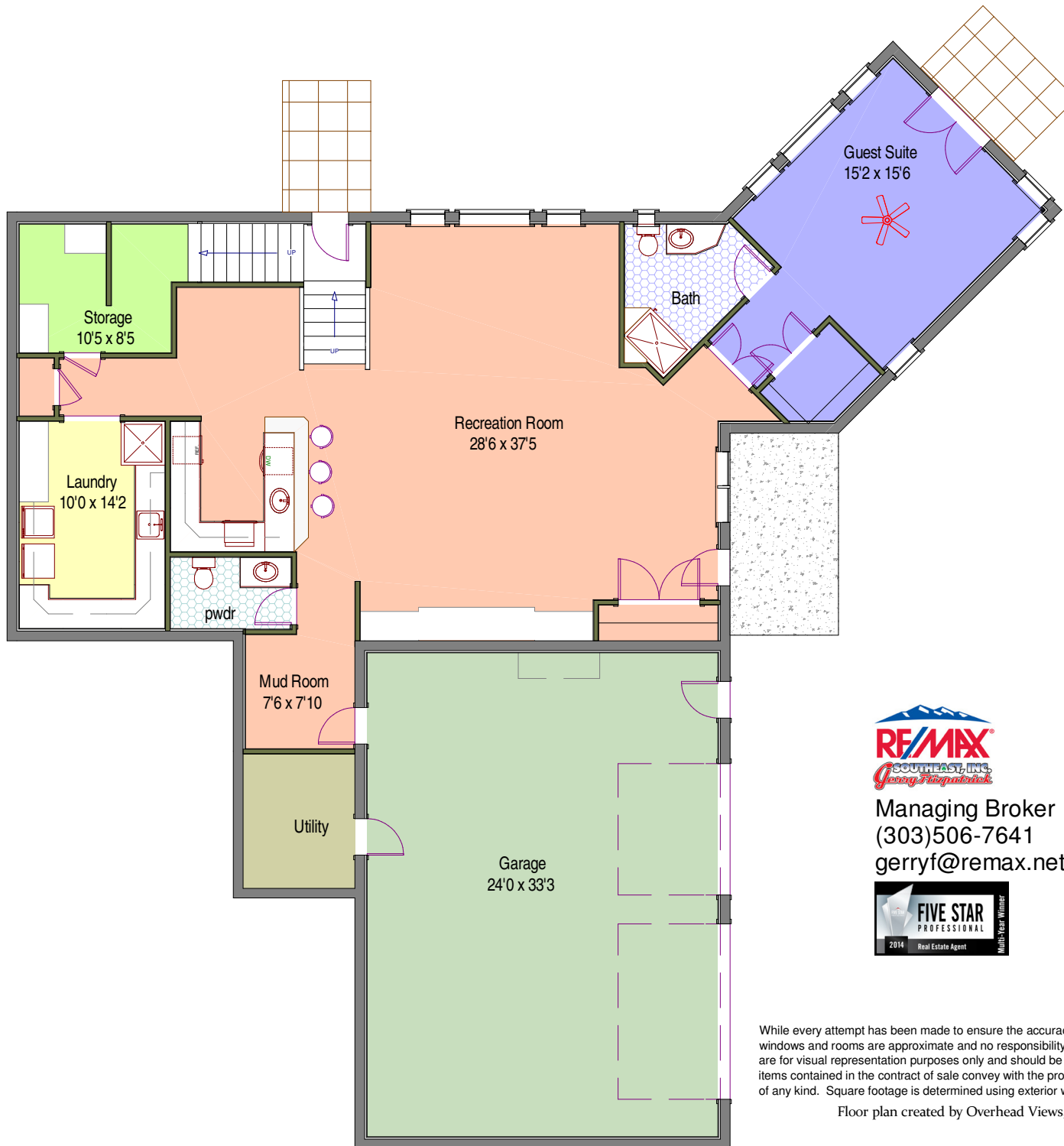


Managing Broker  
(303)506-7641  
gerryf@remax.net

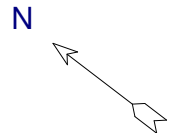


11482 Belle Meade Drive  
Conifer, Colorado

Lower Level



Managing Broker  
(303)506-7641  
gerryf@remax.net



While every attempt has been made to ensure the accuracy of the floorplan contained here, measurements of doors, windows and rooms are approximate and no responsibility is taken for any omission or mis-statement. These plans are for visual representation purposes only and should be used as such by any prospective purchaser. Only those items contained in the contract of sale convey with the property. Floor plan is not an architectural as-built nor a survey of any kind. Square footage is determined using exterior wall dimensions and is not guaranteed.

Floor plan created by Overhead Views, (303)886-9578, eswaldner@nednet.net

11482 Belle Meade Drive  
Conifer, Colorado



Managing Broker  
(303)506-7641  
gerryf@remax.net



While every attempt has been made to ensure the accuracy of the floorplan contained here, measurements of doors, windows and rooms are approximate and no responsibility is taken for any omission or mis-statement. These plans are for visual representation purposes only and should be used as such by any prospective purchaser. Only those items contained in the contract of sale convey with the property. Floor plan is not an architectural as-built nor a survey of any kind. Square footage is determined using exterior wall dimensions and is not guaranteed.

Floor plan created by Overhead Views, (303)886-9578, eswaldner@nednet.net